

FEED MIXER WAGONS

HORIZONTAL TRAILED MIXERS

PRODUCTS RANGE

STURTI
Excellence since 1956





IN LOVE WITH FEEDING

Since 1956 we have been producing machines
and SOLUTIONS for ANIMAL FEED AND HEALTH

We envisage a world where economic and environmental sustainability, traceability and animal health may be the leading values to win future feeding challenges.

We have been satisfying our customers' needs with new high end and innovative products and services for more than 65 years.

Innovation, passion, as well as our great team spirit have driven us to become one of the world's leading references in agricultural mechanization.



STORTI PRODUCT RANGE

SELF-PROPELLED



VERTICAL

dobermann^{EVO}
SV

dobermann^{EVO}
SW

dobermann^{EVO}
SW GP

terrier^{EVO}
SW

TRAILED



HORIZONTAL

husky
MT

husky
DS

boxer
MT

boxer
DS

STATIONARY



HORIZONTAL

husky
ST

STATIONARY



VERTICAL

dunker
ST



terrier*
SW

SELF-PROPELLED



pointerEVO

pointer*

greyhound*

HORIZONTAL

* AVAILABLE ONLY IN SPECIFIC MARKETS



dogo
MT

TRAILED



dunker
T1



dunker
T2



dunker
T3

VERTICAL

SERVING THE BARN



sweeper



SB30



motobrush

STORTI HORIZONTAL MIXER WAGONS

TRAILED AND STATIONARY MIXERS



IN LOVE
WITH FEEDING

PLUS

Discover our advantages



LOADING <

MIXING AND TMR <

OPTIONS <

UNLOADING <

COMPACT FEEDING <



LOADING

The rear silage loader, available for all DS horizontal mixers in 3 widths (1400, 1650, 1800 mm), preserves the perfect feed fibre and structure in all types of bunkers: corn silage, grass silage, hay, straw and other types of feed.

The rear silage loader is activated by a powerful hydraulic motor that, thanks to its rotor design, does not mishandle silage structure and feed, while maintaining high loading performances and accurate quantities. Specific options are available for intensive use of the silage loader by

Multiple solutions for a fast precise and performing mix.

selecting a cast iron body pump and a dedicated cooling system.

Storti is careful to comply with the most stringent safety rules. Therefore, we have equipped our silage loaders with an electro-hydraulic clutch which, operated by or Dinacom 2 electric control, stops the mixing and loading process as soon as the operator moves to an unsafe position.



IN LOVE
WITH FEEDING®

The silage loader is safely attached to the mixer wagon during transport thanks to a specific hooking mechanism which avoids

any stress or damage when travelling on uneven terrains.



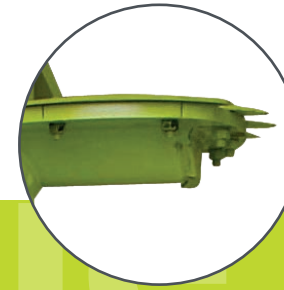
Our MT horizontal mixers can easily be filled by using a common telescopic loader or tractor loader arms either from the side or from the rear by means of a dedicated hopper.

MIXING AND TMR

Storti horizontal mixers: multiple technologies to reach the best solutions.

Horizontal mixing system main advantages:

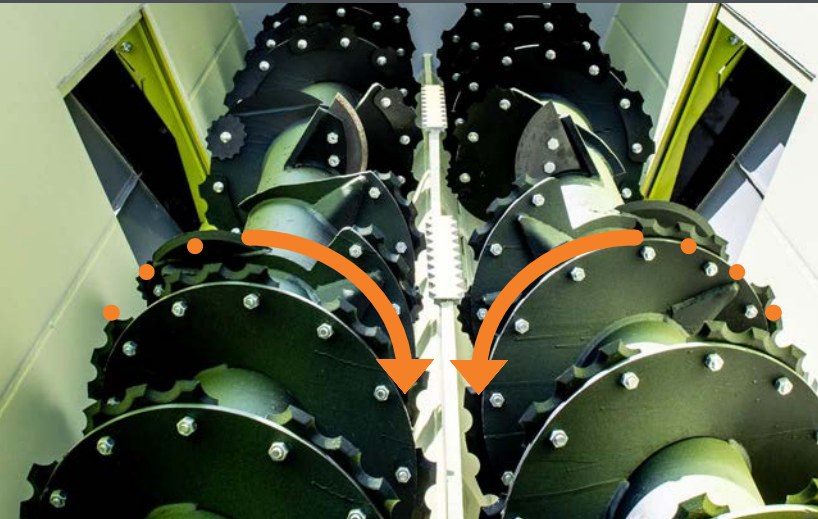
- A quick and precise fibre cut thanks to the reduced distance between knives and breaker bars which improves animal rumination.
- Possibility of preparing specific rations for smaller groups of animals by maintaining the same mixing quality.
- Superior mixing quality as our multi-flow system is less affected by the specific weight of each component.
- 90% dust reduction coming from the mixing process also when processing dry feeds.
- Adjustable cutting performances by modifying the distance between knives and breaker bars.



Only genuine spare parts guarantee a lasting trim and mixing performance.

IN LOVE
WITH FEEDING

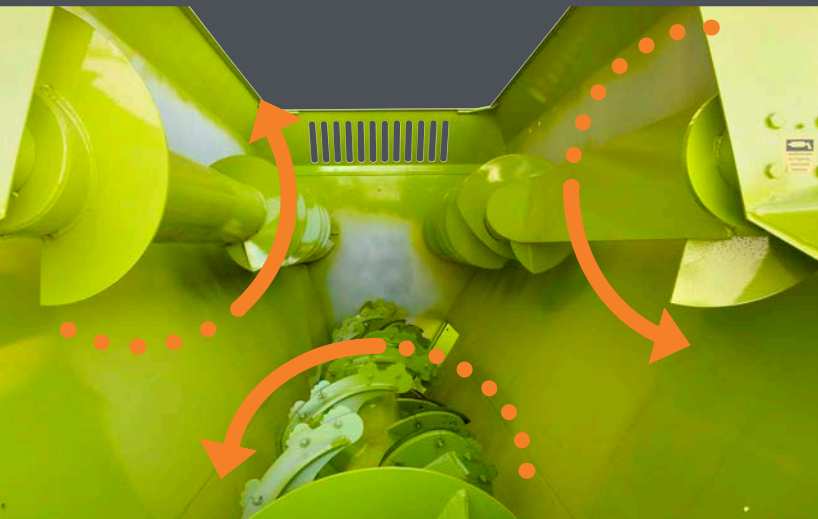




Boxer: 2 counter-opposed mixing augers.

Our 2-auger counter-opposed “volcanic” mixing technology enables long fibre quick cut also when processing complete bales, resulting in an extremely soft final mix. As a matter of fact, the complete distribution of knives along the augers provides excellent cutting performances which have become a benchmark in our industry.

Power requirements remain low even when processing long fibres and heavy loads.



Husky: Multi-flow 3-auger mixing technology.

Our extended experience worldwide using different types of feed helped us optimize our Multi-flow mixing technology. The bottom paddle auger with multiple angles of attack provides maximum TMR homogeneity and an efficient fibre cut to improve ingestion and rumination.

Our 3-auger technology maximizes the efficient use of the mixer volume. The main mixing auger moves the feed from rear to front where the top augers move the ingredients back towards the rear where the flow starts again.



OPTIONS

To comply with customers' growing needs, our list of options has increased in range and depth.

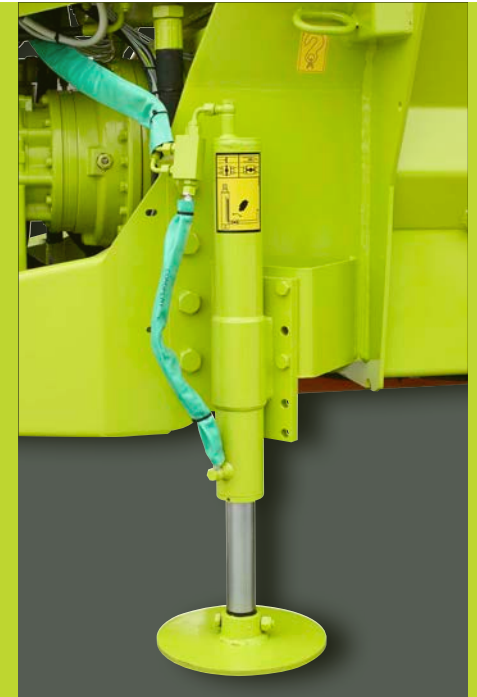
Improving has always been Storti's DNA and our technical solutions have enhanced the TMR mixing experience.

Some of the most requested and appreciated options are:

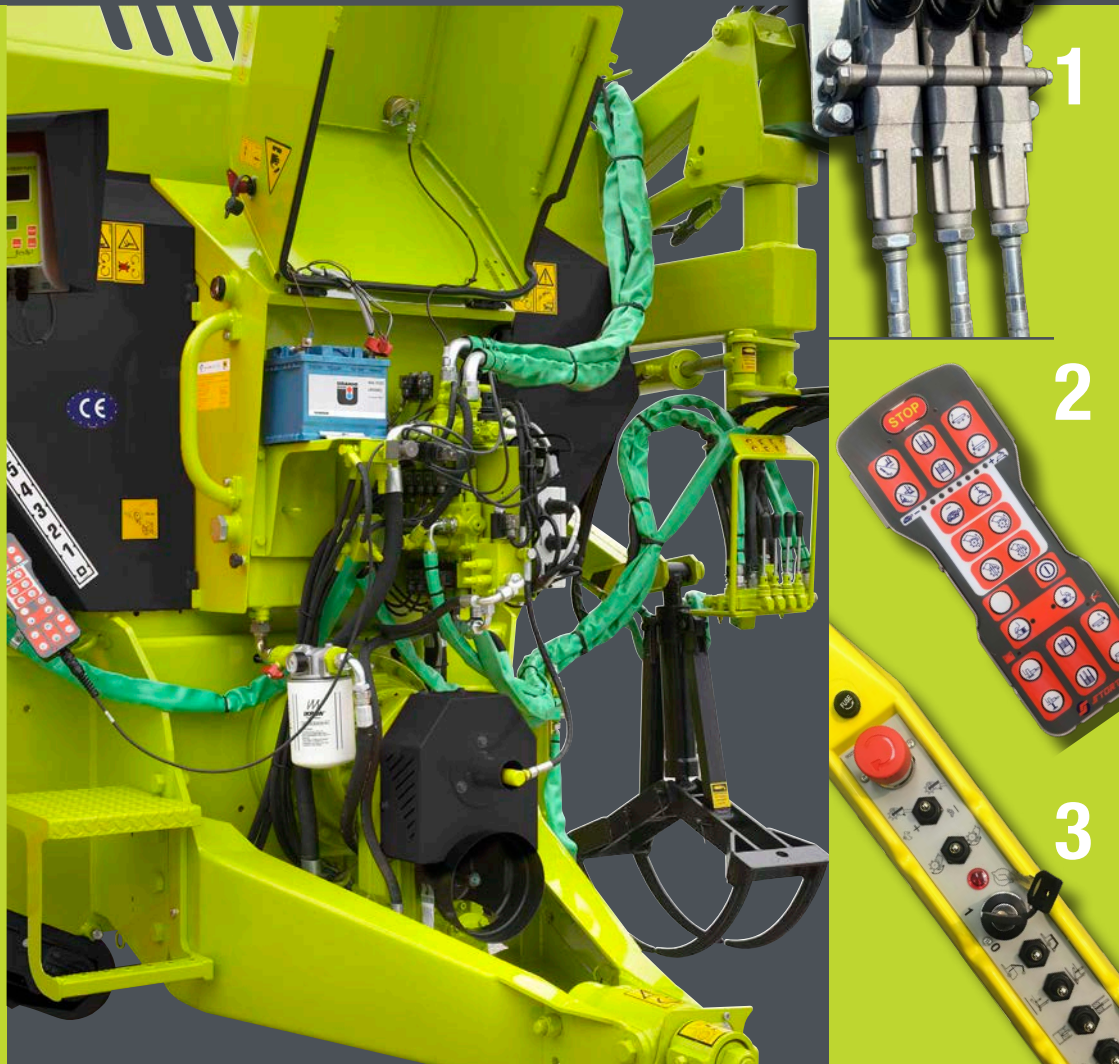
- Stainless steel bottom to increase the working life of the mixer
- Lower wheels to reduce the overall mixer height
- Multiple lengths unloading belts
- Braking systems and roadworthy certifications

The correct solution for all needs.

- Weighing systems and precision feeding software
- Larger wheels for a lower ground pressure when working on muddy terrains
- Silage loaders with aggressive knives patterns when working with highly compacted feed



IN LOVE
WITH FEEDING



Comfortable access and easy maintenance.

Maintenance is made easy by a correct design of the access to all mechanical, electric and hydraulic components, which are centralized and protected by removable bonnets

Mixing augers greasing and adjusting is simple and accessible.

Controls and functions.

1. Flexible cable controls are standard for our MT models, while option for DS models in non-EU countries.

2. Dinacom 2 electronic controls are standard for DS models and an integral component of our silage loading safety system, while option on all MT models.

3. The DTO control is an option for MT and DS models (only in non-EU countries).



UNLOADING

When you are looking for a precise, even unloading and a complete tank cleanliness, horizontal feed mixers are the best solution.

Horizontal feed mixing is appreciated when you need an accurate unloading and in particular for smaller groups of animals (i.e. beef cattle boxes) as the

Maximum tank cleanliness with even unload.

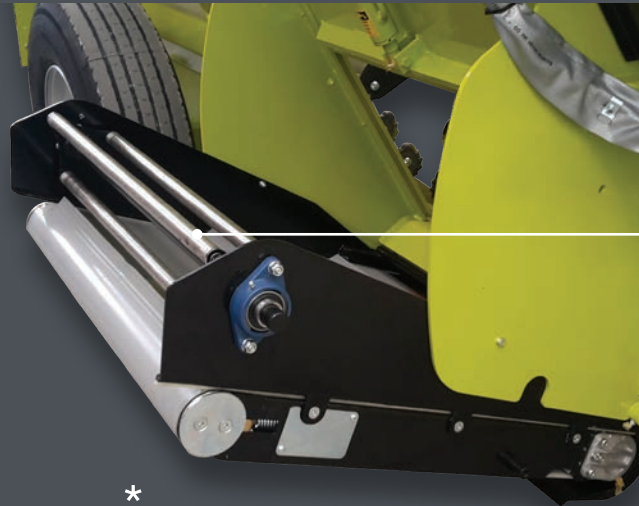
feed flow is easily controlled by the operator.

PVC unloading belts enable a scalable feed distribution, while maintaining a very low noise level also at high speed. It is possible to unload feed at a distance with a mechanism that is safe for the animals as well as for the operator.



Wide unloading doors

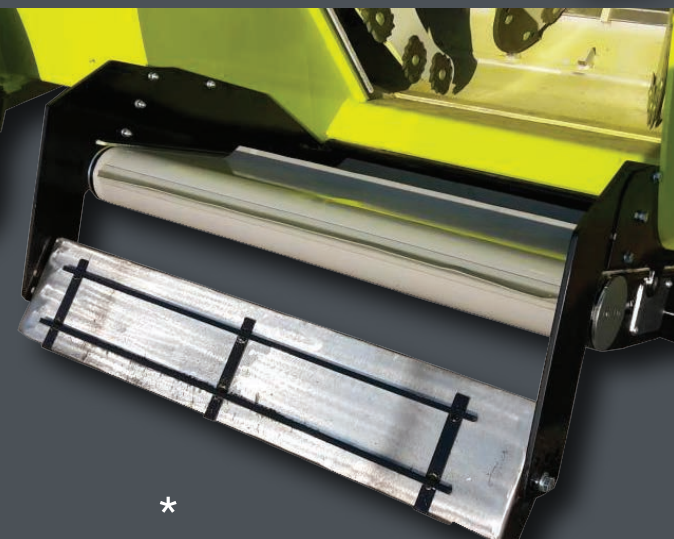
IN LOVE
WITH FEEDING



The rotation magnet is available for our complete range of mixers. Coupled to PVC unloading belts, it enables an efficient search and removal of metal scraps in your TMR, such as nuts, bolts and steel wire. The rotation movement of the magnetic paddle improves TMR fluffiness and palatability.



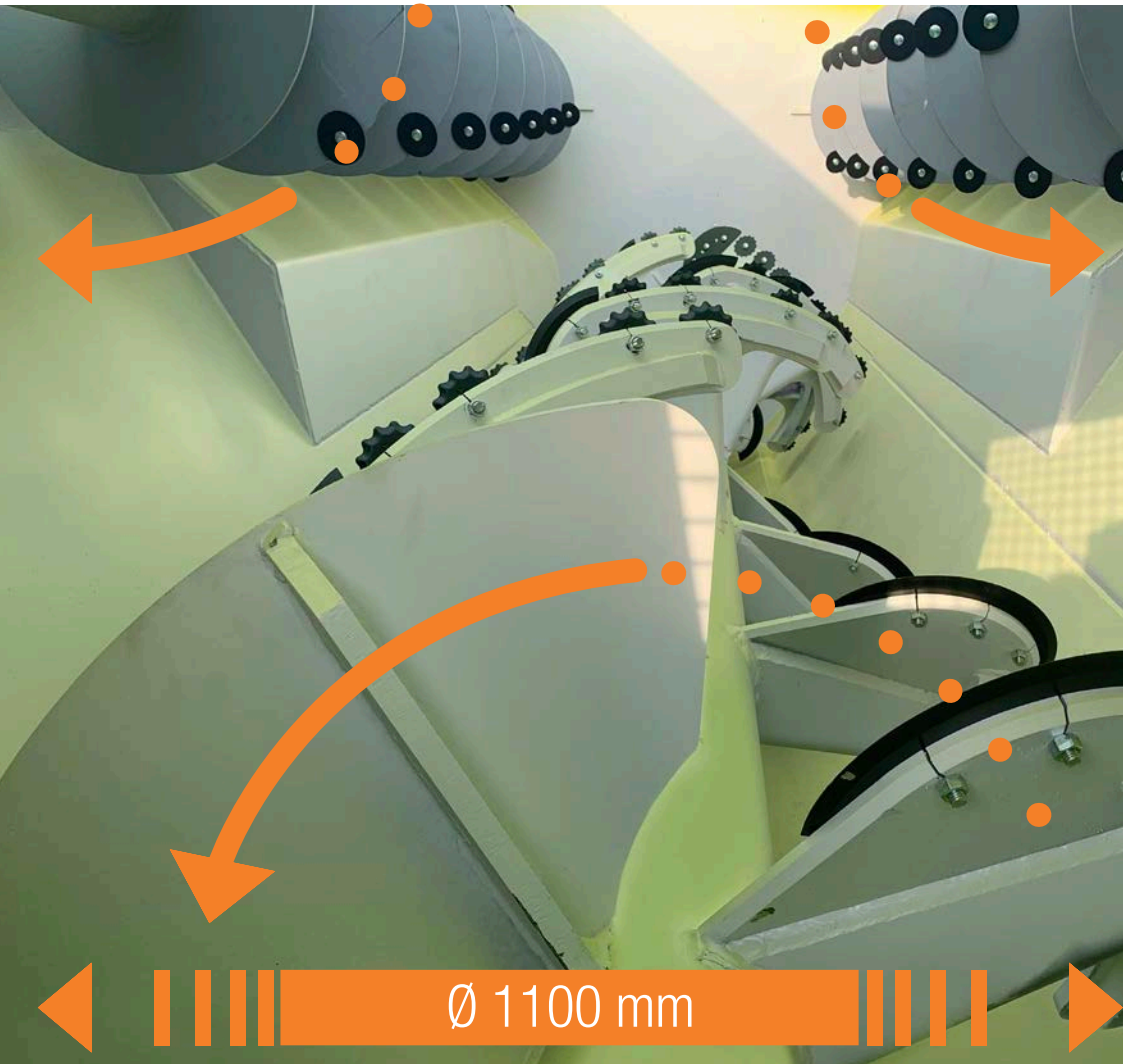
Our fix magnets are a simple and economical solution that maintain the unloading flow and act as a magnetic chute where metal scraps are trapped.



Having metal scrap in your TMR?
Our magnets will do the job.

* To obtain better photographic material for this catalogue, some of the safety protections have been temporarily removed. We remind you that for your safety, such protections must not be removed or tampered with.

STURTI



COMPACT FEEDING

A new trend which is already a must in various countries.

Compact Feeding is a relatively new concept. It was developed in Denmark around 10 years ago. It consists in adding water to concentrates and let this pre-mix mature for hours or


even for the whole night. Silage feed is then added to obtain an extremely compact and heavy mix, so animals are compelled to eat the complete TMR avoiding any selection. This guarantees that the entire herd will be fed with the same TMR ration.

Comparative and independent tests in Denmark have proved that the most suitable type of mixing technology for this type of mixes is the 3-auger horizontal system, as it provides homogeneity and tank cleanliness when unloading. Our DOGO 3-auger range of horizontal mixer has been developed with Compact Feeding in mind.



IN LOVE WITH FEEDING

Upper counter-rotating augers with knives, 1100 mm diameter main cutting-mixing bottom auger with Piranha adjustable knives.



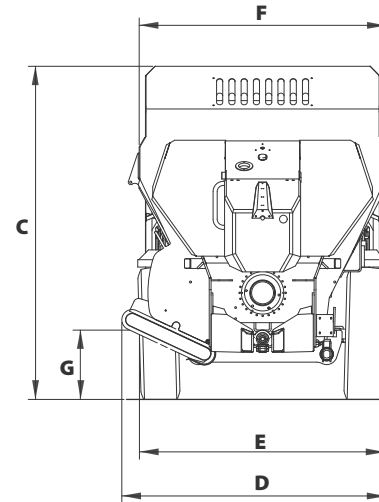
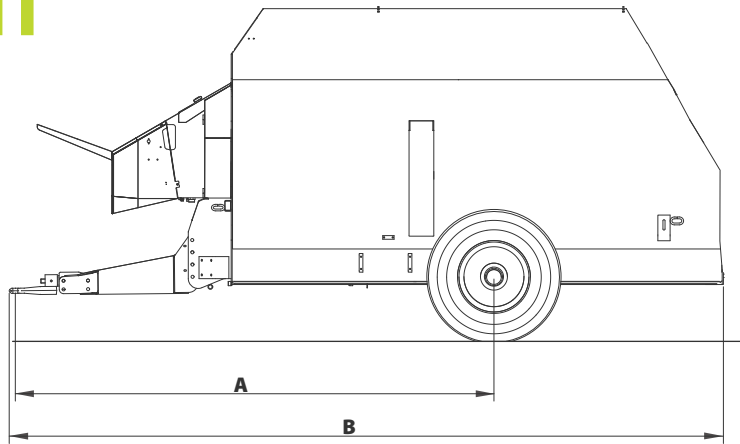
Dogo: the horizontal range
for larger farms.

The DOGO range has been also developed to satisfy the demand of high-capacity horizontal mixers for intensive and continuous applications.

Dogo is aimed at larger farms that appreciate the quality of horizontal mixing technology while using high loading capacities.

STURTI

HUSKY MT



TECHNICAL DATA SHEET

		A	B	C	D	E	F	G	H	I	J	Power required	Empty weight	Loaded weight
	m ³	mm	mm	mm	mm	mm	mm	mm	mm	mm	mm	kW-HP	kg	kg
MT 50	5	3.250	4.445	2.100	1.780	1.710	1.665	415				34-45	2.550*	4.700
MT 70	7	3.315	4.915	2.285	1.825	1.760	1.750	410				35-47	3.050*	6.700
MT 90	9	3.660	5.270	2.545	2.080	1.990	1.865	535				40-54	3.950*	8.350
MT 120	12	3.910	5.905	2.715	2.155	1.990	2.015	565				46-61	4.600*	9.900
MT 160	16	4.200	6.655	2.815	2.220	2.200	2.140	555				53-71	5.700*	11.900
MT 190	19	4.350	6.900	2.950	2.270	2.275	2.265	580				57-76	6.150*	13.000

*Data are indicative and may change according to the configurations.

Husky MT: Just mixing

The Husky MT range is our 3-auger essential and compact feed mixer from 5 to 19 m³ capacity.

The excellent central positioning of the axle enables a reduced wheel track improving the manoeuvrability in tight areas and a perfect distribution of the masses. The front PVC unloading belt offers unmatched visibility to the operator and large 800 mm wide door for 5 and 7 m³ and 900 mm for the bigger models.

The MT models allow the operator to access the mixer by means of a rear safety grill to check TMR quality and add concentrates and flours.

Storti's standard weighing system is equipped with 3 cylindrical dynamic load cells which provide maximum stability and accuracy of weight.

A sturdy and reliable transmission is provided by an epicycloid gearbox directly connected to the cutting-mixing auger with a dust reducing ring. The top augers are activated by an externally lubricated chain transmission.

HUSKY MT



50

70

90

120

160

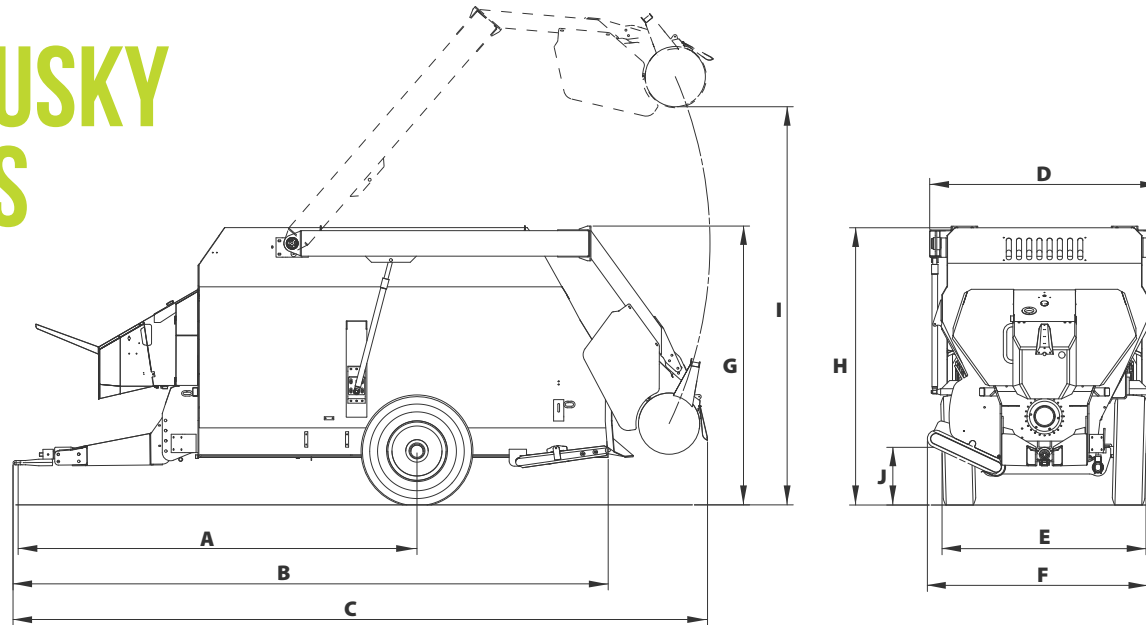
190

B

STURTI E

D

HUSKY DS



TECHNICAL DATA SHEET

	A	B	C	D	E	F	G	H	I	J	Power required	Empty weight	Loaded weight	
m ³	mm	mm	mm	mm	mm	mm	mm	mm	mm	mm	kW-HP	kg	kg	
DS 50	5	3.250	4.445	5.285	1.930	1.710	1.780	2.130	2.100	3.525	415	40-54	3.000*	5.000
DS 70	7	3.315	4.915	5.765	2.020	1.760	1.825	2.255	2.285	3.850	410	43-57	3.800*	7.000
DS 90	9	3.660	5.270	6.145	2.100	1.990	2.080	2.525	2.545	4.055	535	48-64	4.950*	8.800
DS 120	12	3.910	5.905	6.805	2.250	1.990	2.155	2.745	2.715	4.450	565	55-74	5.600*	10.500
DS 160	16	4.200	6.655	7.480	2.500	2.200	2.220	2.795	2.815	4.665	555	62-83	6.750*	12.500

*Data are indicative and may change according to the configurations.

Husky DS: 3-auger feed mixers with silage loader

The Husky DS range, with rear silage loader, is our 3-auger essential and compact feed mixer from 5 to 16 m³ capacity.

The excellent central positioning of the axle enables a reduced wheel track improving the manoeuvrability in tight areas and a perfect distribution of the masses.

The front PVC unloading belt offers unmatched visibility to the operator and large 800 mm wide door for 5 and 7 m³ and 900 mm for the bigger models. Husky DS is equipped with a rear silage loader with 1400 mm rotor width for 5-7 m³ and 1650 mm for 9-12-16 m³, activated by a powerful and reliable independent hydraulic system. The electronic controls that activate the electro-hydraulic clutch simplify the use of the feed mixer by maintaining the operator in a safe environment.

Storti's standard weighing system is equipped with 3 cylindrical dynamic load cells which provide maximum stability and accuracy of weight. A sturdy and reliable transmission is provided by an epicycloid gearbox directly connected to the cutting-mixing auger with a dust reducing ring. The top augers are activated by an externally lubricated chain transmission.

HUSKY DS

50

70

90

120

160



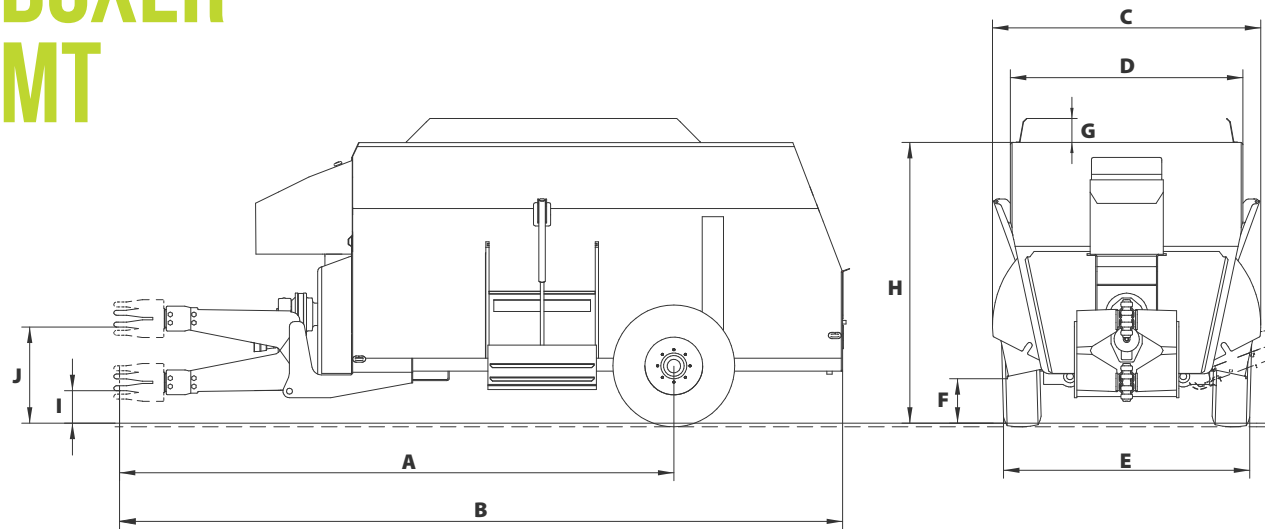
STURTI E

F

B

A

BOXER MT



TECHNICAL DATA SHEET

		A	B	C	D	E	F	G	H	I	J	Power required	Empty weight	Loaded weight
	m ³	mm	mm	mm	mm	mm	mm	mm	mm	mm	mm	kW-HP	kg	kg
MT 70	7	4.360	5.065	2.180	1.770	1.950	240	200	2.095	240	780	40-55	. *	.
MT 90	9	4.780	5.750	2.180	1.770	2.050	290	200	2.215	300	840	44-60	. *	.
MT 120	12	4.700	6.125	2.275	1.970	2.110	285	200	2.395	290	830	51-70	5.080*	10.000
MT 150	15	4.900	6.525	2.275	1.970	2.110	310	200	2.650	320	860	62-85	5.460*	11.000
MT 180	18	5.390	7.065	2.510	2.180	2.510	280	200	2.715	300	940	70-95	6.260*	13.000
MT 210	21	5.540	7.360	2.510	2.180	2.510	280	200	2.905	300	940	81-110	6.920*	14.000
MT 240	24	5.710	7.700	2.510	2.180	2.510	280	200	3.100	300	945	88-120	7.340*	15.000

*Data are indicative and may change according to the configurations.

Boxer MT: 2 counter-opposed augers with a quick fibre cut.

Boxer MT with 2 counter-opposed augers comprises a range of 7 models from 7 to 24 m³.

Two wide central doors allow to unload from both sides by using the standard chutes or optional PVC belts.

The MT models allow the operator to access the mixer from the rear by means of a safety grill or the optional wide hopper to check the TMR and to add components and concentrates to the mix.

Storti's standard weighing system is equipped with 3 cylindrical dynamic load cells which provide maximum stability and accuracy of weight.

A sturdy and reliable transmission is provided by an epicycloid gearbox and by two robust chains in oil bath for models 18-21-24 m³.

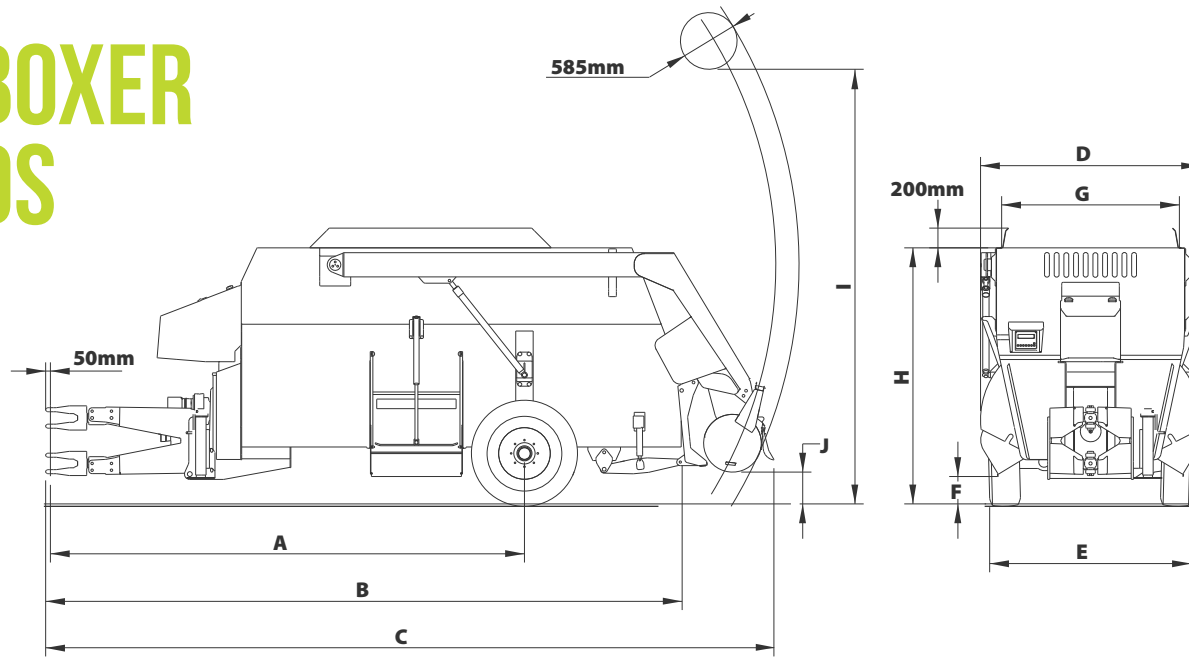
Quick access to the transmission makes the Boxer easy to maintain.

BOXER MT

- 70
- 90
- 120
- 150
- 180
- 210
- 240



BOXER DS



TECHNICAL DATA SHEET

	A	B	C	D	E	F	G	H	I	J	Power required	Empty weight	Loaded weight	
m ³	mm	mm	mm	mm	mm	mm	mm	mm	mm	mm	kW-HP	kg	kg	
DS 70	7	4.360	5.065	5.990	2.180	1.950	240	1.600	2.095	3.850	290	48-64	3.000*	7.000
DS 90	9	4.780	5.750	6.670	2.180	2.050	290	1.600	2.215	4.000	265	55-74	3.800*	8.800
DS 120	12	4.700	6.125	7.210	2.275	2.110	285	1.800	2.395	4.000	500	59-80	5.750*	10.000
DS 150	15	4.900	6.525	7.520	2.275	2.110	310	1.800	2.650	4.000	340	62-85	6.400*	11.000
DS 180	18	5.390	7.065	8.050	2.510	2.510	280	2.200	2.715	4.400	340	70-95	7.500*	13.000

*Data are indicative and may change according to the configurations.

Boxer DS: 2 counter-opposed augers with rear silage loader. A robust and reliable mixer.

Boxer DS with 2 counter-opposed augers comprises a range of 5 models from 7 to 18 m³.

Two wide central doors allow to unload from both sides by using the standard chutes or optional PVC belts.

Boxer DS is equipped with a rear silage loader with 1650 mm wide rotor for 7-9 m³ and 1800 mm wide for 12-15-18 m³, activated by a powerful and reliable independent hydraulic system.

The electronic controls that activate the electro-hydraulic clutch simplify the use of the feed mixer by maintaining the operator in a safe environment.

Storti's standard weighing system is equipped with 3 cylindrical dynamic load cells which provide maximum stability and accuracy of weight.

A sturdy and reliable transmission is provided by an epicycloid gearbox and by two robust chains in oil bath for models 18-21-24 m³.

BOXER DS

- 70
- 90
- 120
- 150
- 180

585mm

200mm

E

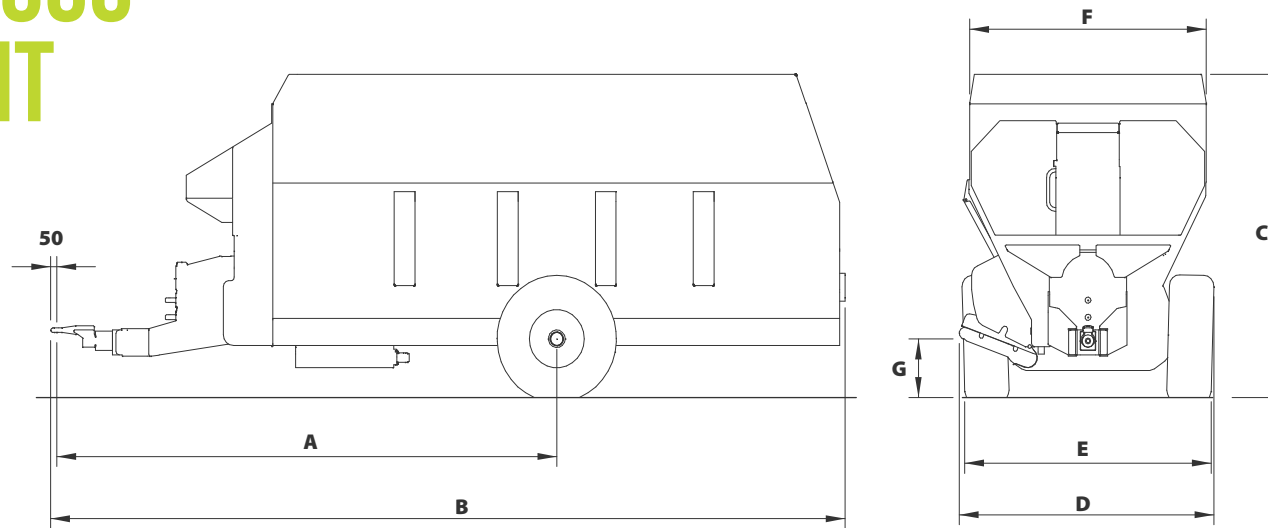
B

C



STURTI

DOGO MT



TECHNICAL DATA SHEET

	A	B	C	D	E	F	G	H	I	J	Power required	Empty weight	Loaded weight
m ³	mm	mm	mm	mm	mm	mm	mm	mm	mm	mm	kW-HP	kg	kg
MT 220	22	4.660	7.220	2.960	2.460	2.420	2.390	540			74-100	8.160*	15.500
MT 250	25	4.820	7.720	2.960	2.460	2.420	2.390	540			88-120	8.900*	17.000
MT 280	28	5.050	7.920	3.160	2.460	2.420	2.390	540			103-140	10.000*	19.500

*Data are indicative and may change according to the configurations.

Dogo MT: 3-auger mixer for larger farms

Dogo, available in 22-25-28 m³, is the evolution of the Husky range. It features the same 3-auger multi-flow mixing system with the following advantages:

- Bigger capacity for larger farms
- Reinforced transmission designed for higher loads
- 1100 mm diameter main auger which improves homogeneity and mixing flow, while reducing power demand from the tractor
- Top counter-rotating augers with knives
- Weighing system with 5 load cells for heavy loads
- 12 mm standard tank bottom thickness

Also in the Dogo range, the excellent central position of the axle enables a reduced wheel track improving the manoeuvrability in tight areas and a perfect distribution of the masses.

The 900 mm wide front door with PVC belt enables an unmatched visibility to the operator.

The rear safety grill allows the operator to check the TMR and add components and concentrates.

DOGO MT

220

250

280



B

D **STURTI**

E

F

STATIONARY

A complete electric driven range.

It is always possible to transform our MT horizontal feed mixers into stationary mixers.

Starting from any standard model, a conversion kit enables to obtain a stationary mixer.

The conversion kit consists of a floor stand, an electric control panel with

soft-start or inverter technology, an electric motor and a PTO shaft. Environment sustainability has always driven new solutions. Our electric range is aimed at farms which intend to use self-produced electricity (biogas plants, photovoltaic or other sources)



IN LOVE
WITH FEEDING

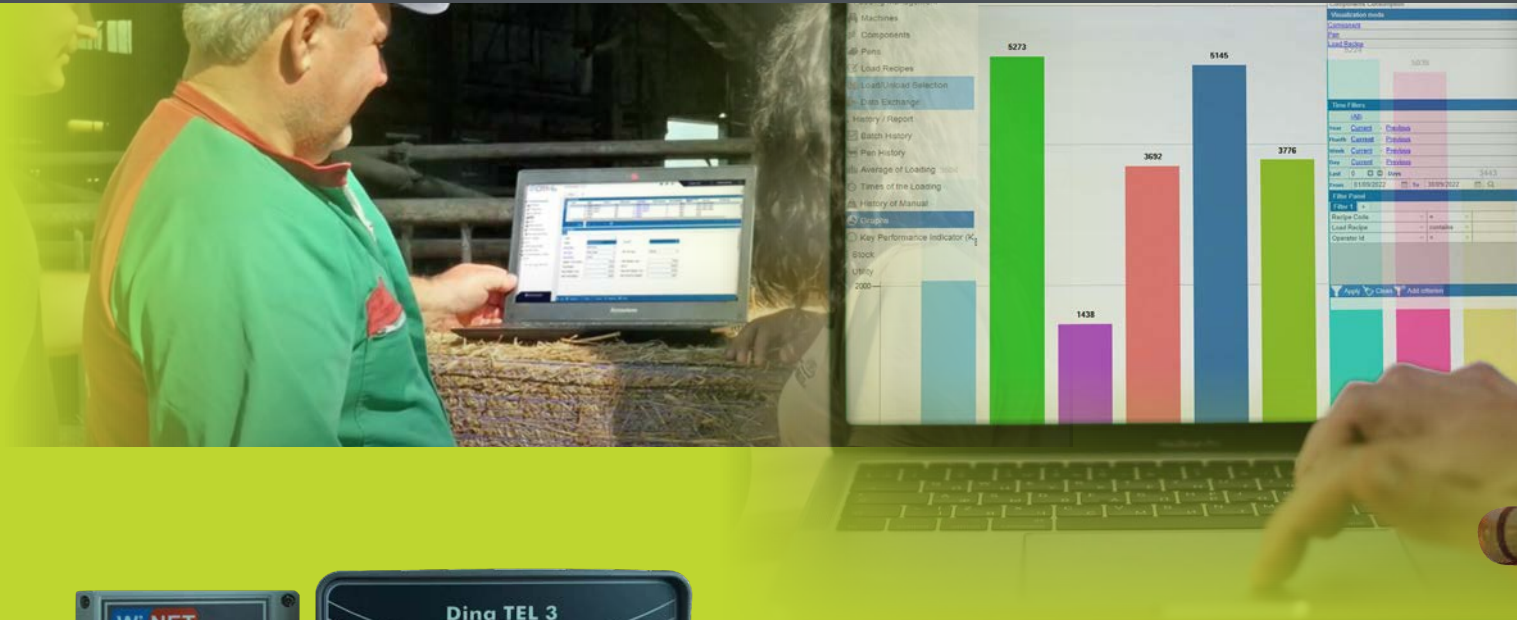
WEIGHING SYSTEMS AND ACCESSORIES

Data management for an accurate monitoring of feeding costs.

All feed mixer wagons are equipped with a complete weighing system.

Weigh boxes may be operated manually or through recipes residing in the internal programmable storage.

Feeding data can be managed via a cloud software that allows to transfer the recipes to the weigh box, upload feeding data to create reports in multiple formats.



EXTRA

ordinary

STORTI

BEYOND THE PRODUCTS





STORTI S.P.A.

Via Castelletto 10
37050 Belfiore VR | ITALY
Phone +39 045 6134311
Fax +39 045 614 9006
info@storti.com

STORTI FRANCE

Za Chateau Gillard Route de Polign
35470 Bain de Bretagne | FRANCE
Phone +33 02 99 44 25 03
Fax +33 2 99 44 25 15
servicestortifrance@storti.com

STORTI DEUTSCHLAND

Phone. +49 170 302 9507
Fax +49 89 982 479 029
stortide@storti.com



DEALER DECAL OR DATA



WWW.STORTI.COM



THE CONTENT OF THIS DOCUMENT IS PURELY INDICATIVE. PLEASE DOUBLE CHECK AVAILABILITY OF A SPECIFIC MODEL IN YOUR AREA.
STORTI S.P.A. IS NOT LEGALLY LIABLE FOR ANY DISCREPANCY IN CONFIGURATION.

